

Certificate IATF 0552071
SGS Certificate number JP21/063216
The management system of

KIOXIA CORPORATION Yokkaichi Plant

IATF USI: TEXNYC
800 Yamanoisshiki-cho, Yokkaichi-shi, Mie Japan

has been assessed and certified as meeting the requirements of

IATF 16949:2016

Edition 1

For the following Scope
Design and manufacture of FLASH memories

EXCLUSIONS : None

3 Year certification is valid from 28 October 2024 until 27 October 2027 and remains valid subject to satisfactory surveillance audits.

Version no. 5. Current version updated 18 October 2025



Authorised by
Chris-HY Ding
Technical reviewer
Contracted Office : SGS United Kingdom Ltd, Station Road, Oldbury, B69 4LN, UK.
Email : Neil.Hall@sgs.com



This document is an authentic electronic certificate for Client' business purposes use only. Printed version of the electronic certificate are permitted and will be considered as a copy. This document is issued by the Company subject to SGS General Conditions of certification services available on [Terms and Conditions](#) | SGS. Attention is drawn to the limitation of liability, indemnification and jurisdictional clauses contained therein. This document s copyright protected and any unauthorized alteration, forgery or falsification of the content or appearance of this document is unlawful.



Certificate IATF 0552071, continued
SGS Certificate number JP21/063216

KIOXIA CORPORATION

Yokkaichi Plant

IATF 16949:2016

Edition 1

Additional facilities

Stand-Alone Remote Support Location (SA-RSL)

KIOXIA CORPORATION Head Office

IATF USI: L6Y4CK

1-21 Shibaura 3-chome, Minato-ku, Tokyo Japan

Summary of Activities

Management Review, Logistics, Aftersales, Sales, Quality System Management, Internal Audit Management, Marketing, Policy Making, Strategic Planning

Stand-Alone Remote Support Location (SA-RSL)

KIOXIA CORPORATION Yokohama Technology Campus

IATF USI: L6Y9G2

5-1 Kasama 2-chome, Sakae-ku, Yokohama-shi, Kanagawa Japan

Summary of Activities

Product Design, Aftersales, Process Design, Marketing

Stand-Alone Remote Support Location (SA-RSL)

KIOXIA America, Inc. Head Office

IATF USI: 66XGF6

2610 Orchard Parkway, San Jose, CA, U.S.A.

Summary of Activities

Aftersales



This document is an authentic electronic certificate for Client' business purposes use only. Printed version of the electronic certificate are permitted and will be considered as a copy. This document is issued by the Company subject to SGS General Conditions of certification services available on [Terms and Conditions](#) | SGS. Attention is drawn to the limitation of liability, indemnification and jurisdictional clauses contained therein. This document s copyright protected and any unauthorized alteration, forgery or falsification of the content or appearance of this document is unlawful.



Certificate IATF 0552071, continued
SGS Certificate number JP21/063216

KIOXIA CORPORATION

Yokkaichi Plant

IATF 16949:2016

Edition 1

Additional facilities

Stand-Alone Remote Support Location (SA-RSL)

KIOXIA America, Inc. Irvine Office

IATF USI: T6XKTZ

5231 California Avenue, Irvine, CA, U.S.A.

Summary of Activities

Logistics, Aftersales, Sales

Stand-Alone Remote Support Location (SA-RSL)

KIOXIA Europe GmbH

IATF USI: 3LENX4

Hansaallee 181, Düsseldorf, Germany

Summary of Activities

Logistics, Aftersales, Sales

Stand-Alone Remote Support Location (SA-RSL)

KIOXIA (China) Co., Ltd. Shanghai Head Office

IATF USI: PGZ52M

10th Floor, Wheelock Square, 1717 West Nanjing Road, Jingan District, Shanghai, China

Summary of Activities

Logistics, Aftersales, Sales



This document is an authentic electronic certificate for Client' business purposes use only. Printed version of the electronic certificate are permitted and will be considered as a copy. This document is issued by the Company subject to SGS General Conditions of certification services available on [Terms and Conditions](#) | SGS. Attention is drawn to the limitation of liability, indemnification and jurisdictional clauses contained therein. This document s copyright protected and any unauthorized alteration, forgery or falsification of the content or appearance of this document is unlawful.



Certificate IATF 0552071, continued
SGS Certificate number JP21/063216

KIOXIA CORPORATION

Yokkaichi Plant

IATF 16949:2016

Edition 1

Additional facilities

Stand-Alone Remote Support Location (SA-RSL)

KIOXIA (China) Co., Ltd. Shenzhen Branch

IATF USI: 3RWEZH

Room 708-710, Floor7, Galaxy Development Center, No.18 Zhongxinwu Road, Futian District, Shenzhen, China

Summary of Activities

Aftersales, Sales

Stand-Alone Remote Support Location (SA-RSL)

KIOXIA Singapore Pte. Ltd.

IATF USI: YNYCH9

460 Alexandra Road, #09-04/06, mTower, Singapore

Summary of Activities

Logistics, Aftersales, Sales

Stand-Alone Remote Support Location (SA-RSL)

KIOXIA Korea Corporation

IATF USI: 6NYTS4

33F, Samsung Life Insurance Seocho Tower, 4, Seocho-daero 74-gil, Seocho-gu, Seoul, Korea

Summary of Activities

Logistics, Aftersales, Sales



This document is an authentic electronic certificate for Client' business purposes use only. Printed version of the electronic certificate are permitted and will be considered as a copy. This document is issued by the Company subject to SGS General Conditions of certification services available on [Terms and Conditions](#) | SGS. Attention is drawn to the limitation of liability, indemnification and jurisdictional clauses contained therein. This document s copyright protected and any unauthorized alteration, forgery or falsification of the content or appearance of this document is unlawful.



Certificate IATF 0552071, continued
SGS Certificate number JP21/063216

KIOXIA CORPORATION

Yokkaichi Plant

IATF 16949:2016

Edition 1

Additional facilities

Stand-Alone Remote Support Location (SA-RSL)

KIOXIA Taiwan Corporation

IATF USI: 6NYWS3

3F-5, No.168, Section 3, Nanjing East Road, Zhongshan District, Taipei City, Taiwan

Summary of Activities

Logistics, Aftersales, Sales

Stand-Alone Remote Support Location (SA-RSL)

KIOXIA CORPORATION Kansai Branch

IATF USI: CPYCLT

Nissay Shin-Osaka Building, 4-30, Miyahara 3-chome, Yodogawa-ku, Osaka-shi, Osaka Japan

Summary of Activities

Aftersales, Sales

Stand-Alone Remote Support Location (SA-RSL)

KIOXIA CORPORATION Asahi Test Center

IATF USI: CMYZGM

2000 Oaza-Nao, Asahi-cho, Mie-gun, Mie Japan

Summary of Activities

Testing



This document is an authentic electronic certificate for Client' business purposes use only. Printed version of the electronic certificate are permitted and will be considered as a copy. This document is issued by the Company subject to SGS General Conditions of certification services available on [Terms and Conditions](#) | SGS. Attention is drawn to the limitation of liability, indemnification and jurisdictional clauses contained therein. This document s copyright protected and any unauthorized alteration, forgery or falsification of the content or appearance of this document is unlawful.



Certificate IATF 0552071, continued
SGS Certificate number JP21/063216

KIOXIA CORPORATION

Yokkaichi Plant

IATF 16949:2016

Edition 1

Additional facilities

Stand-Alone Remote Support Location (SA-RSL)

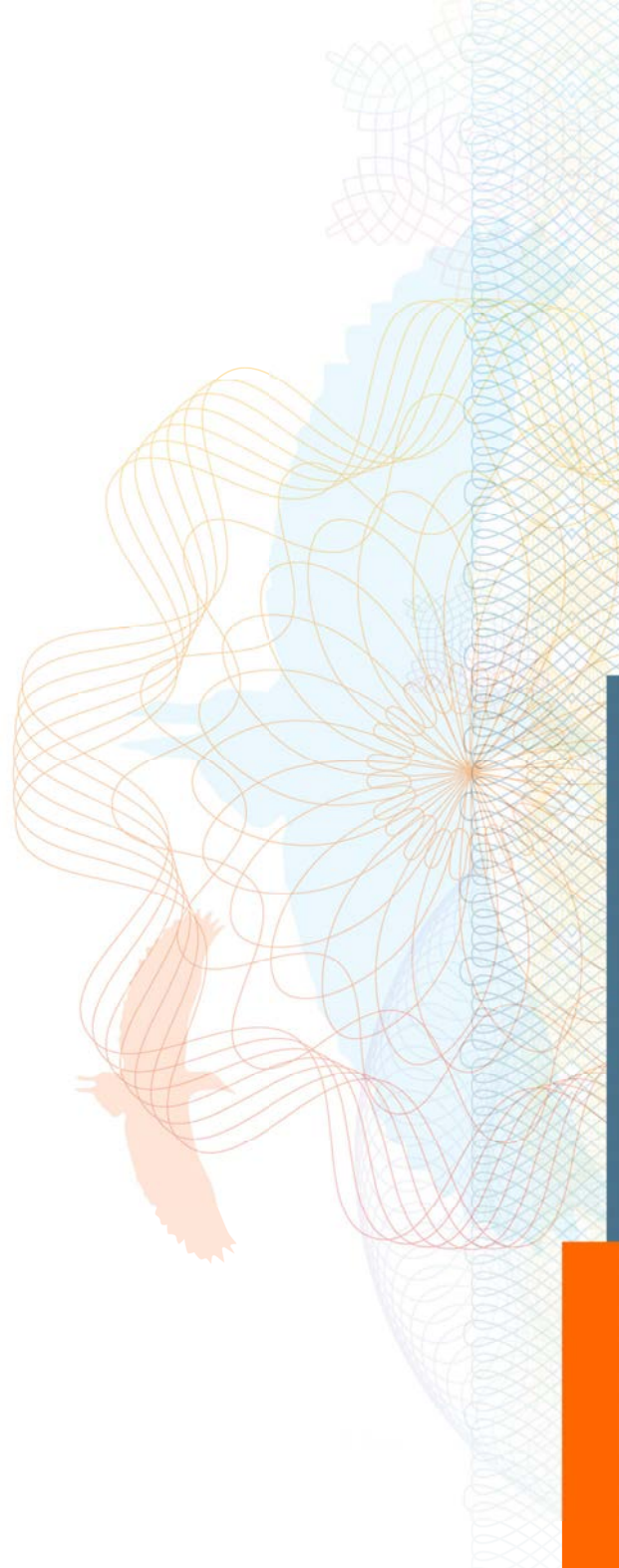
KIOXIA Energy Management Corporation

IATF USI: 3PYYH6

800 Yamanoisshiki-cho, Yokkaichi-shi, Mie Japan

Summary of Activities

Facilities Management



This document is an authentic electronic certificate for Client' business purposes use only. Printed version of the electronic certificate are permitted and will be considered as a copy. This document is issued by the Company subject to SGS General Conditions of certification services available on [Terms and Conditions](#) | SGS. Attention is drawn to the limitation of liability, indemnification and jurisdictional clauses contained therein. This document s copyright protected and any unauthorized alteration, forgery or falsification of the content or appearance of this document is unlawful.

